

An aerial photograph of the Sweetwater Park Softball Complex. The image shows a large, semi-circular stadium with a central seating bowl and two large, circular dugout areas. The field is marked with white lines for softball play. To the left of the stadium is a large parking lot with many spaces. In the background, there are trees and a road. The overall scene is captured in a grayscale or muted color palette.

# SWEETWATER PARK

## SOFTBALL COMPLEX

3D MODEL PERSPECTIVES  
FALL 2020



# SWEETWATER PARK SOFTBALL COMPLEX

## 3D MODEL PERSPECTIVES



### GOALS & OBJECTIVES

- REFLECT THE GROWTH & FUTURE OF THOMSON-MCDUFFIE
- BE A LANDMARK AND A SIGN OF GROWTH FOR THE COUNTY
- ENHANCE SAFETY OF THE COMPLEX
  - ADA SAFETY
- KEEP VISIBILITY OF ALL THE FIELDS FROM THE CENTRAL AREA AND PATHWAYS
- UPDATE BUILDING
- UPDATE PLANTINGS

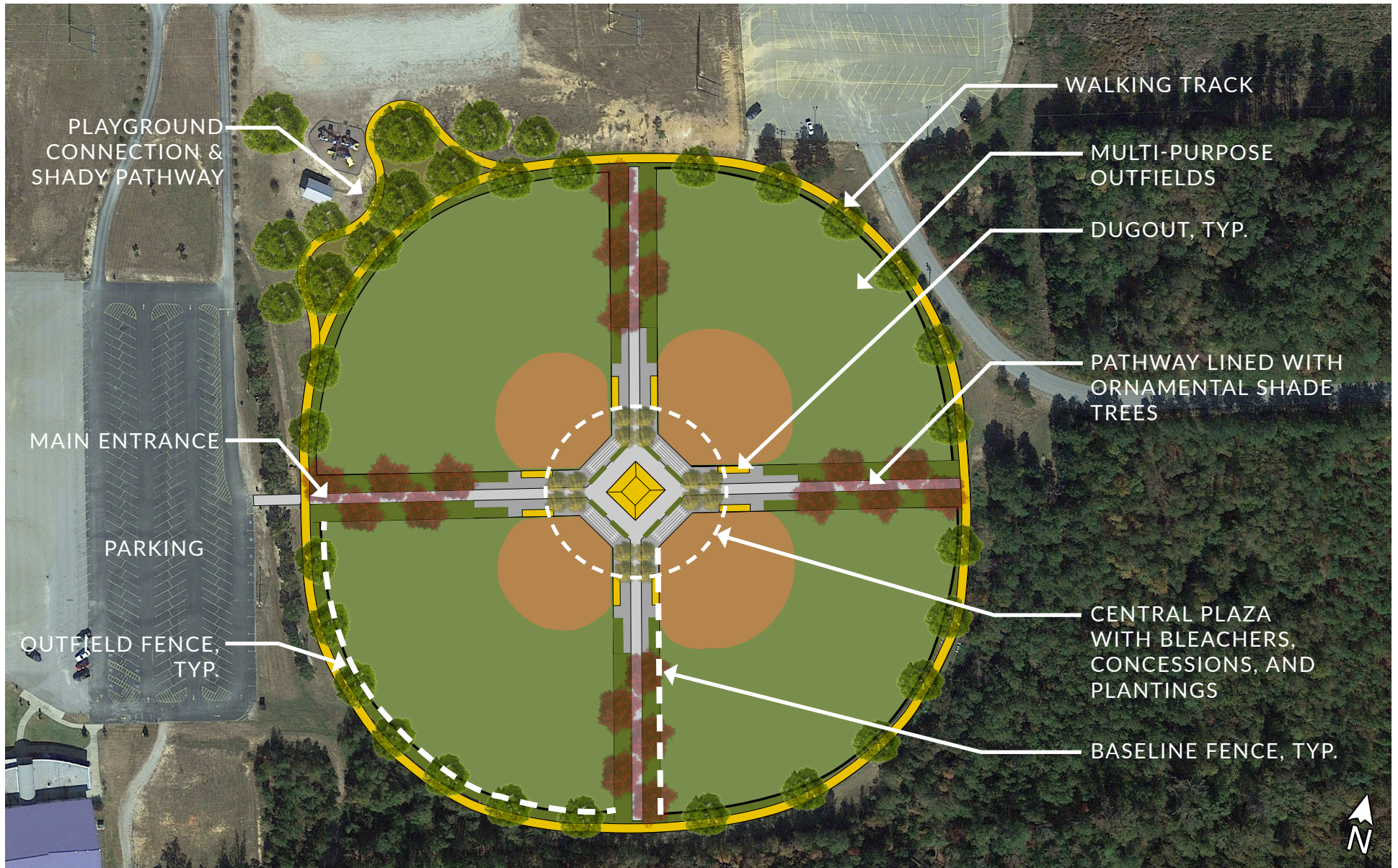
### DESIGN SUGGESTIONS

- CREATE AN IDENTITY FOR THE SPACE
  - NOT A GENERIC BALLPARK
- ENHANCE SAFETY THROUGH LIGHTING, ADA ACCESSIBILITY, AND UPDATES TO INFRASTRUCTURE
- ADD VISUAL INTEREST TO THE COMPLEX THROUGH PLANTINGS, COLOR, AND MATERIALS
- ENHANCE CONNECTIVITY AROUND THE COMPLEX AND TO THE SURROUNDING FEATURES OF THE PARK SUCH AS THE ADJACENT PLAYGROUND
- ESTABLISH A CENTRAL PLAZA AREA TO BE A HUB FOR THE COMPLEX



# SWEETWATER PARK SOFTBALL COMPLEX

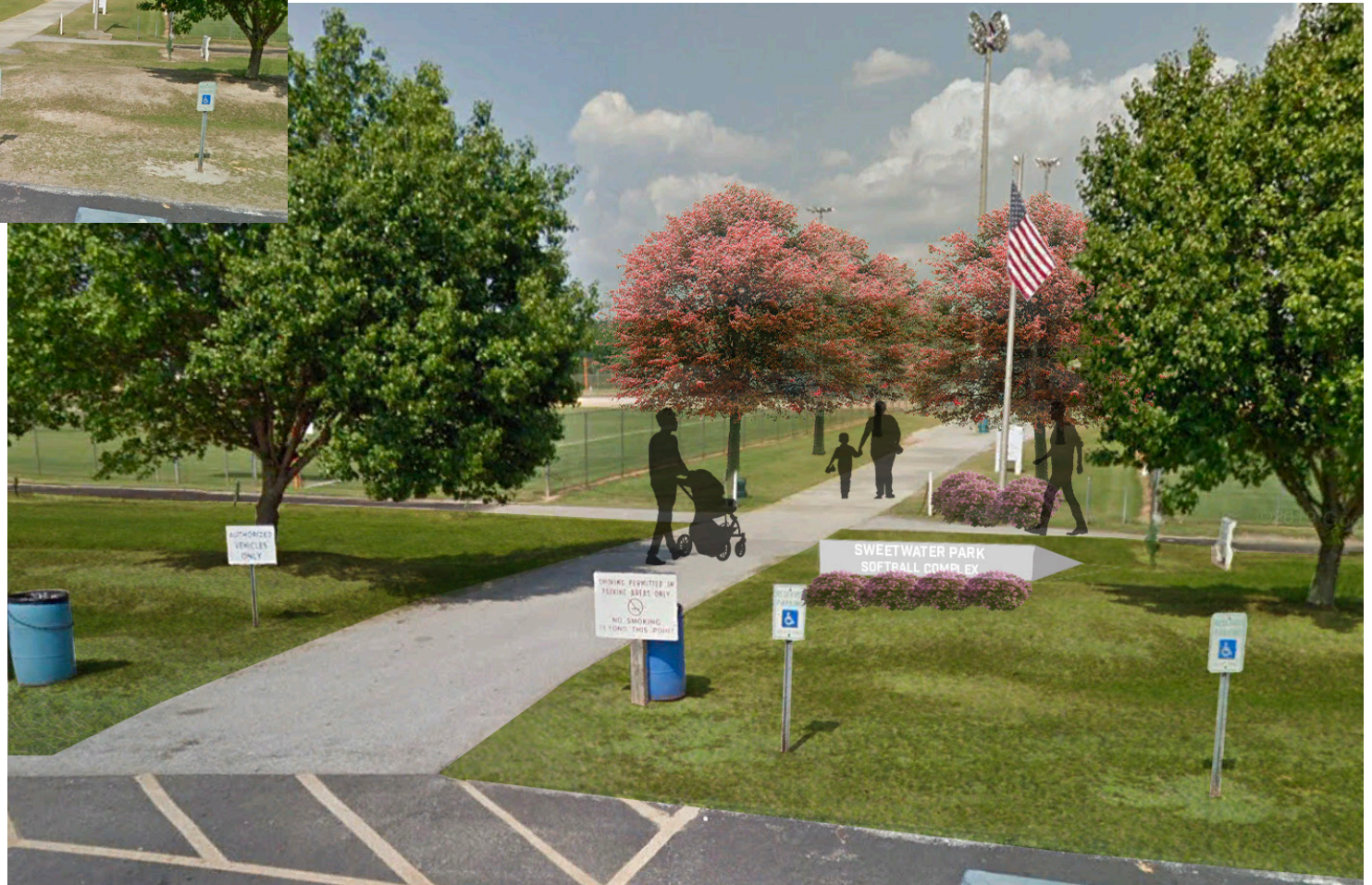
## 3D MODEL PERSPECTIVES





# SWEETWATER PARK SOFTBALL COMPLEX

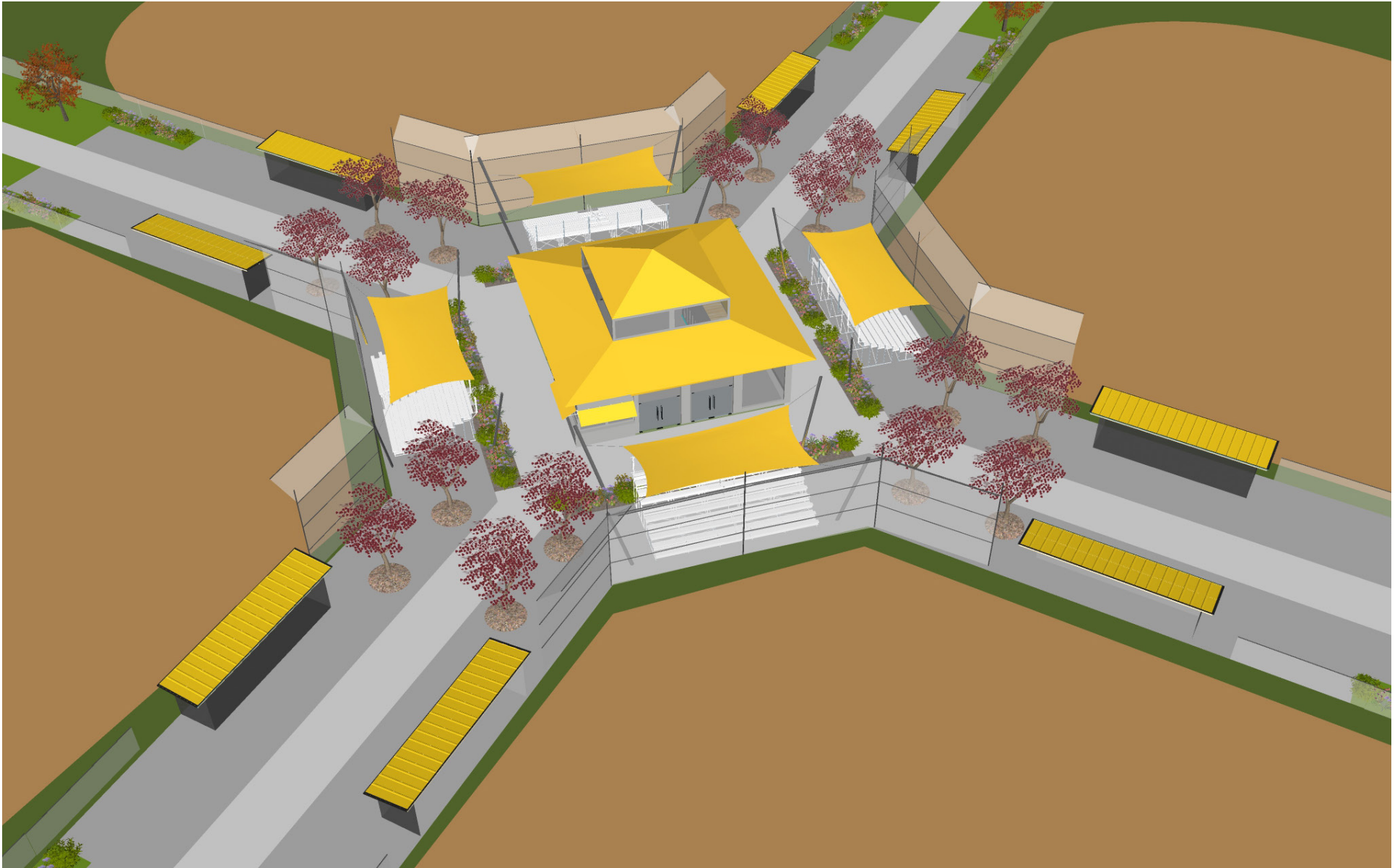
## RENDERED PERSPECTIVE: ENTRANCE





# SWEETWATER PARK SOFTBALL COMPLEX

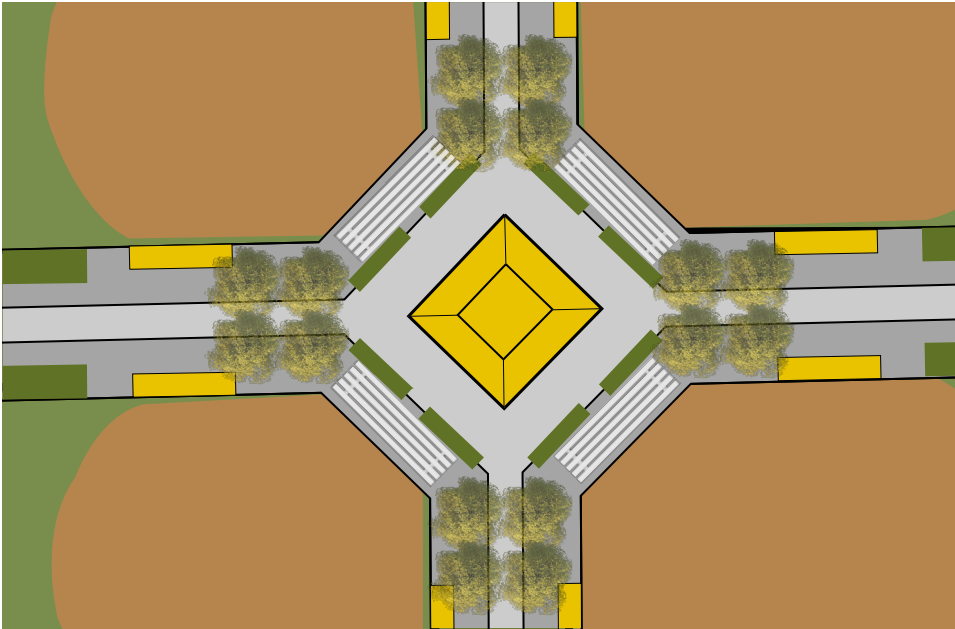
## 3D MODEL PERSPECTIVES





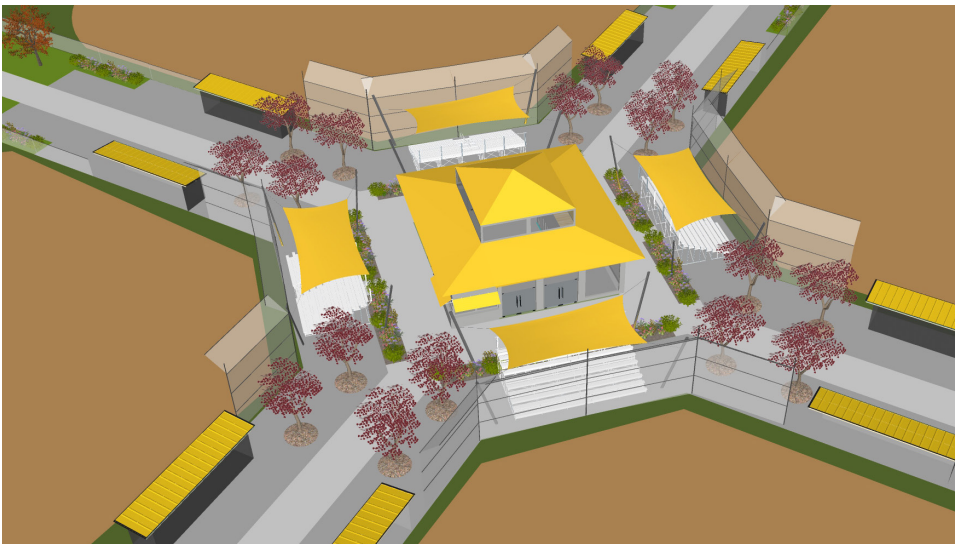
# SWEETWATER PARK SOFTBALL COMPLEX

## 3D MODEL PERSPECTIVES



### CENTRAL PLAZA / CONCESSIONS AREA

- ESTABLISH A CENTRAL HUB FOR THE COMPLEX
- USE ORNAMENTAL TREES TO FRAME THE SPACE AND PLACE PLANTING BEDS ON THE PERIMETER
- USE A DECORATIVE PAVING PATTERN OR ACCENT CONCRETE TO DEMARCATATE THE SPACE

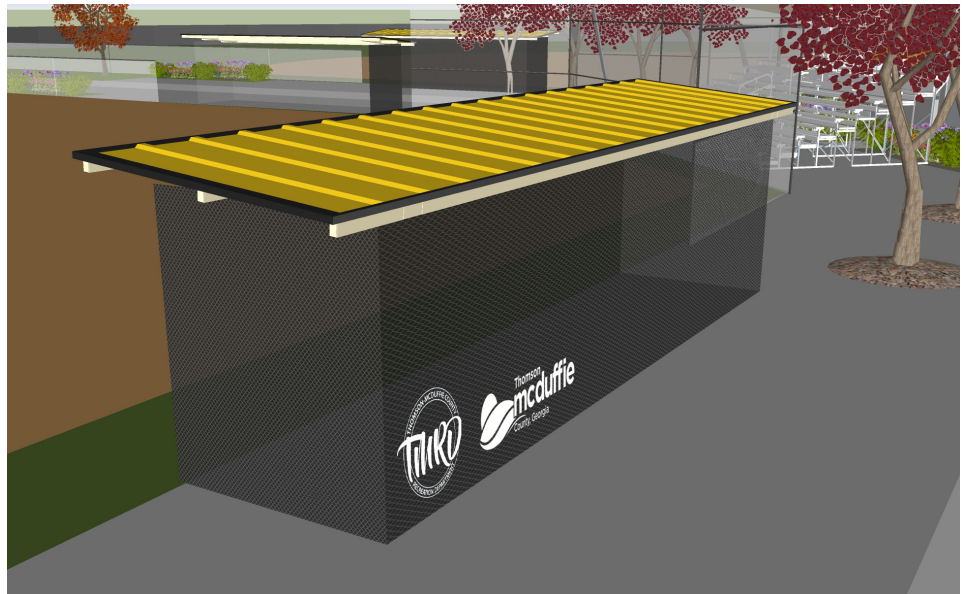
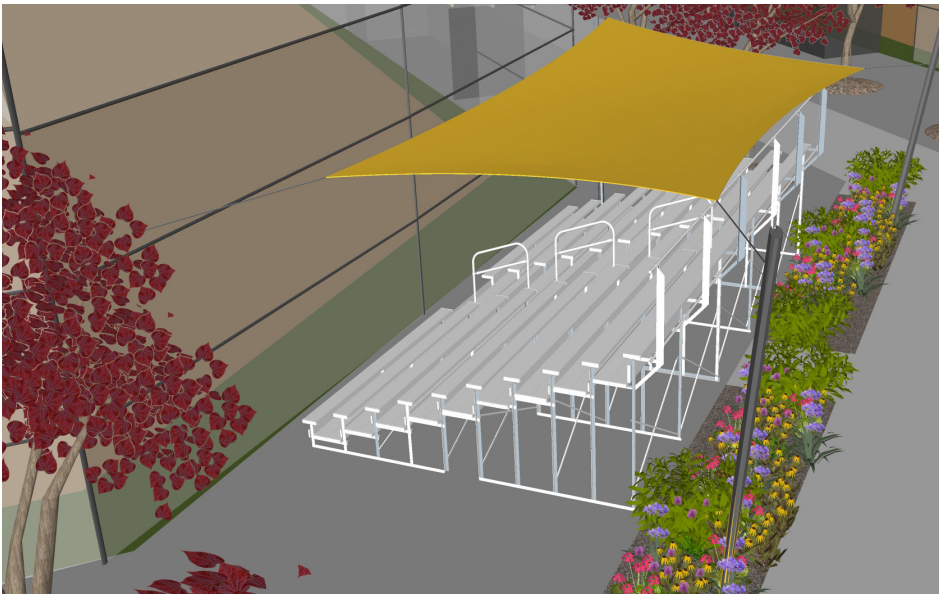
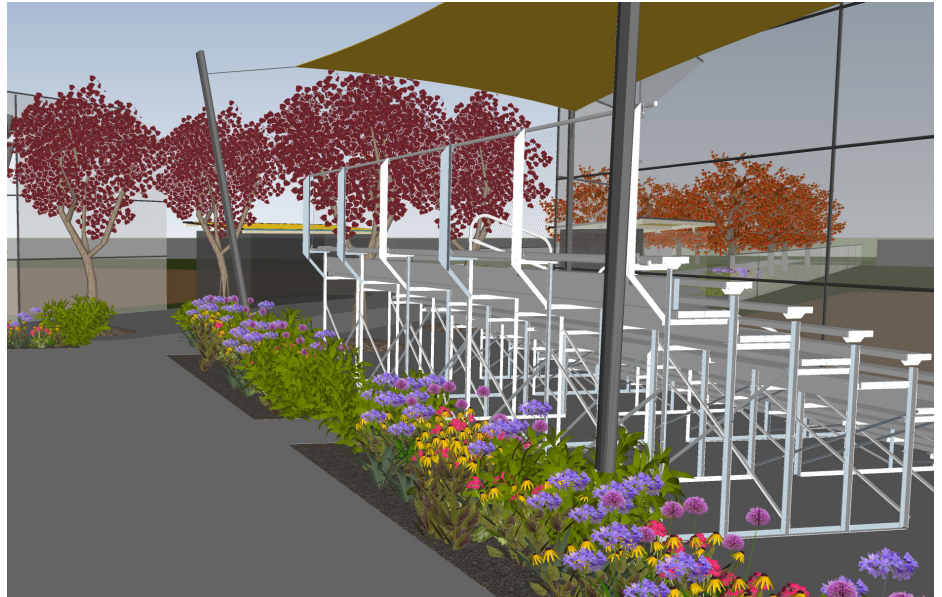
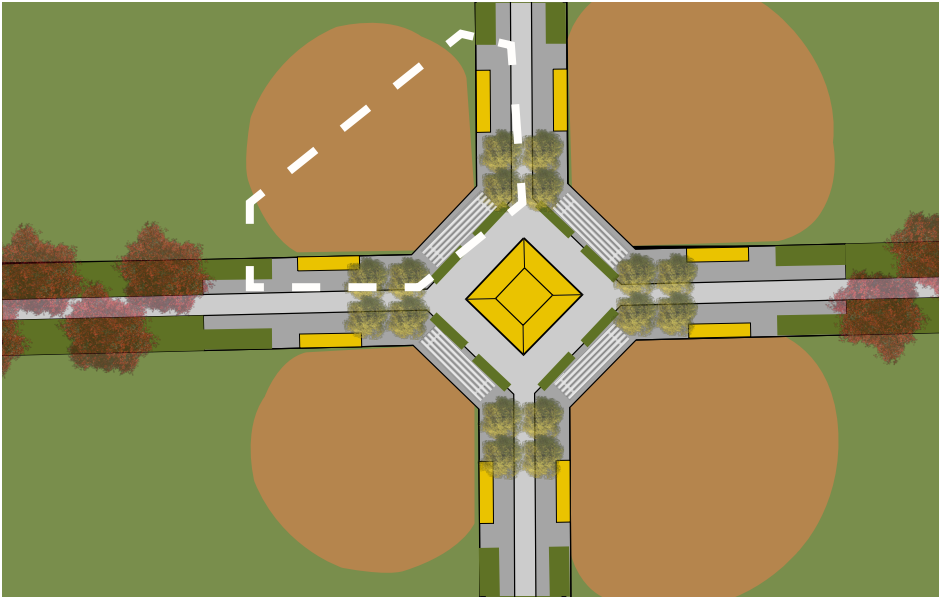




# SWEETWATER PARK SOFTBALL COMPLEX

## 3D MODEL PERSPECTIVES

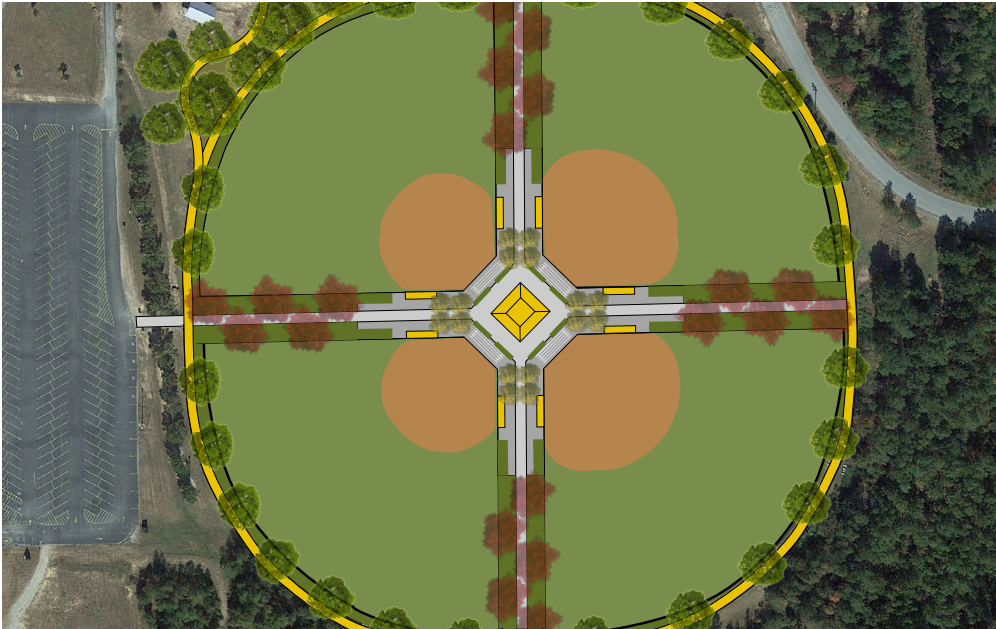
### BLEACHERS AND DUGOUTS





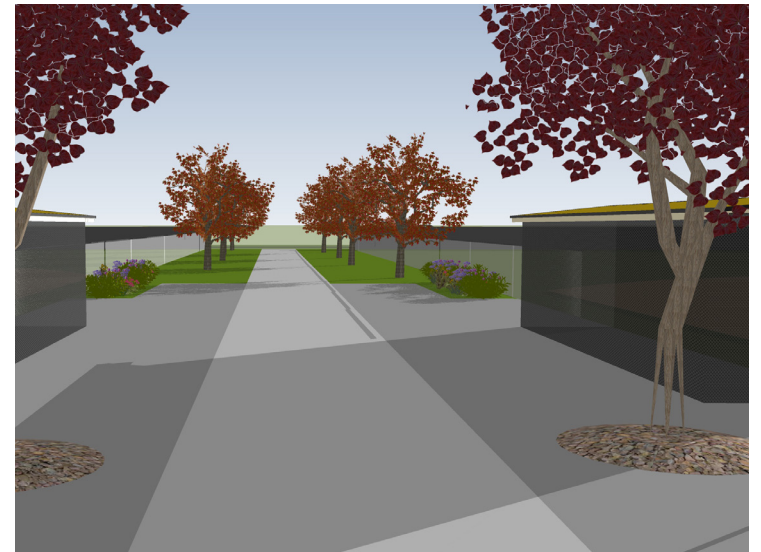
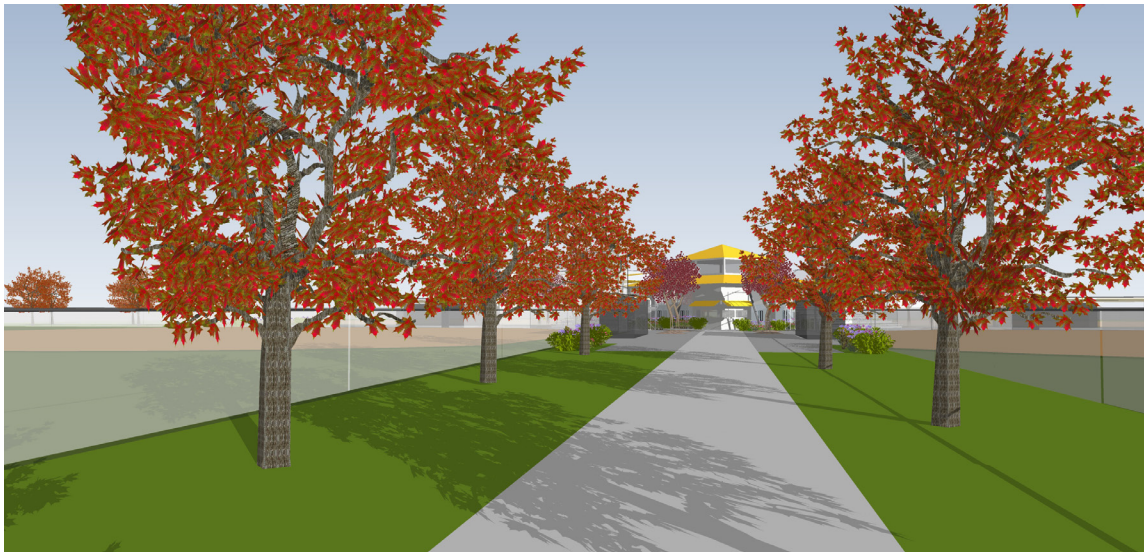
# SWEETWATER PARK SOFTBALL COMPLEX

## 3D MODEL PERSPECTIVES



### WALKWAYS

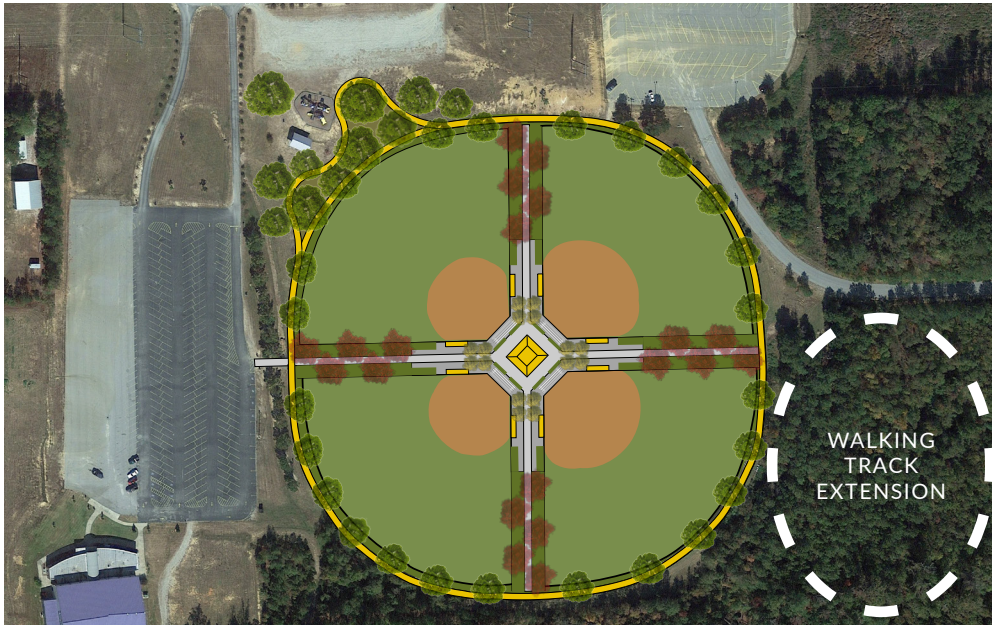
- ENHANCE THE FOUR EXISTING WALKWAYS TO MAKE CORRIDORS GOING THROUGH THE COMPLEX
- FRAME THE WALKWAYS WITH ORNAMENTAL TREES FOR VISUAL INTEREST AND FOR SHADE FOR FANS WATCHING ON ALONG THE BASELINE FENCES
- SHADY GRASS STRIPS ALONG FENCES ALLOW FOR A COMFORTABLE SEATING AND PLAY AREA





# SWEETWATER PARK SOFTBALL COMPLEX

## 3D MODEL PERSPECTIVES



### WALKING TRACK

- THE PERIMETER AREA OF THE FIELDS OFFERS AN EXISTING 8 FOOT WIDE WALKING TRACK THAT COULD BENEFIT FROM UPDATES AND ADDITIONAL EXTENSIONS TO THE PLAYGROUND AND INTO THE WOODED AREA
- THE TRACK NEEDS MORE TREES PLANTED ALONG THE PATH FOR INCREASED SHADE
- CONNECT WALKING TRACK TO THE EXISTING PATH IN THE ADJACENT WOODED THAT IS PART OF THE DISC GOLF COURSE

